

# TRIPFINDER

## WEB BASED TRIP PLANNING

TripFinder combines state-of-the-art trip planning algorithm, dynamic mapping and address-to-address routing packaged in a simple to use website.

### WHY TRIPFINDER?

#### Cost Savings

TripFinder automates responses to trip planning requests from the public, thus increasing your call center capacity.

#### Enhance Customer Service

TripFinder gives the public 24/7 access to best available trip plans and schedules.

#### Increase Ridership

TripFinder attracts new transit users by providing convenient access to transit information.

#### Multi-Modal Regional Trip Plans

TripFinder allows transit users to create trip plans that can include multiple transit agencies and transport modes.

#### Intelligent Suggestions

TripFinder suggests possible addresses, landmarks, and intersections as you type, making it even easier to select an origin and destination.

#### Demand Response Integration

TripFinder integrates fixed-route services into requested demand response trips where possible.

### ARCHITECTURAL DIFFERENCES

#### Open Architecture

TripFinder integrates with any scheduling and geographic data sources, allowing you to choose the best solution for your needs.

#### Fast

TripFinder was developed for public web access from the ground up, resulting in best-in-class performance and itineraries generated in an average of 0.4 seconds.

#### Scalable

TripFinder can scale to any solution scope and trip request volume.

#### Reliable

TripFinder can be configured to achieve availability in excess of 99.7%.



**Enghouse  
Transportation**

# TRIPFINDER

## WEB BASED TRIP PLANNING

### KEY TRIPFINDER FEATURES

#### Dynamic Mapping

Users can select origins and destinations from an interactive map. Full itineraries, including transfers and walking directions, are displayed.

#### Flexible Optimization Criteria

Users can minimize trip time, number of transfers, or walking distance. They can also include/exclude certain routes or modes of transportation.

#### Full Address-to-Address Trip Planning

TripFinder optimizes the entire trip based on both the street and transit networks.

#### Detailed Itinerary Display

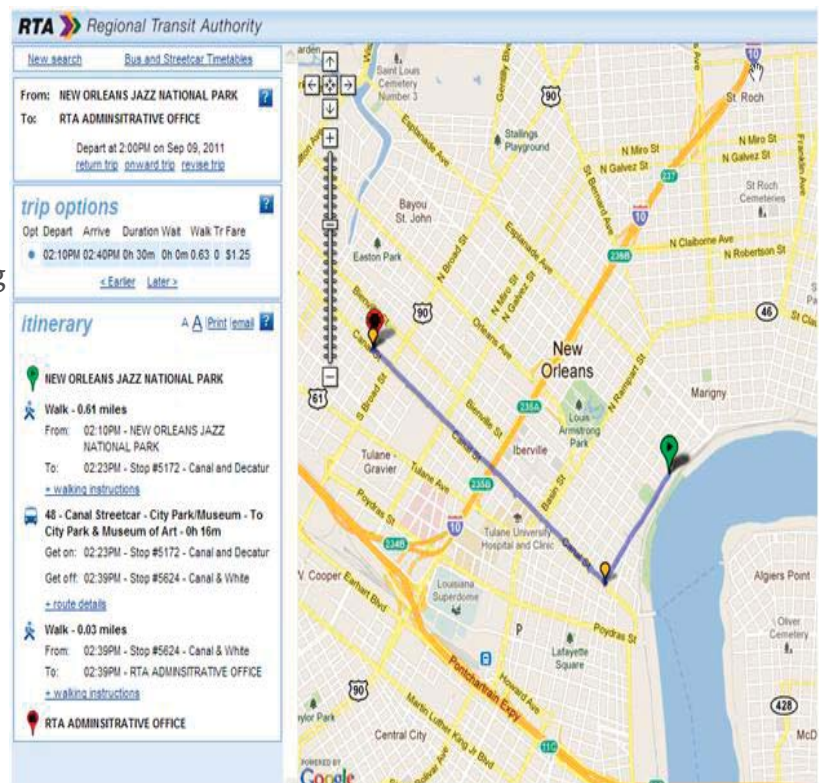
Trip itineraries include full walking and transit directions, total trip time, and total fare. Alternate and return itineraries are available.

#### User Personalization

Users can save preferences, favourite locations, addresses and trip optimization settings.

#### Data Loading

TripFinder includes customizable data loading tools that significantly simplify the updates of geographical and transit data.



### ABOUT ENGHOUSE TRANSPORTATION

With over 25 years experience, Enghouse Transportation is committed to developing and delivering solutions for public and private transportation industries through innovative computerized applications and consulting support. Our enterprise solutions for scheduling, dispatching, workforce management, operations and customer media have evolved from our unmatched industry expertise.

